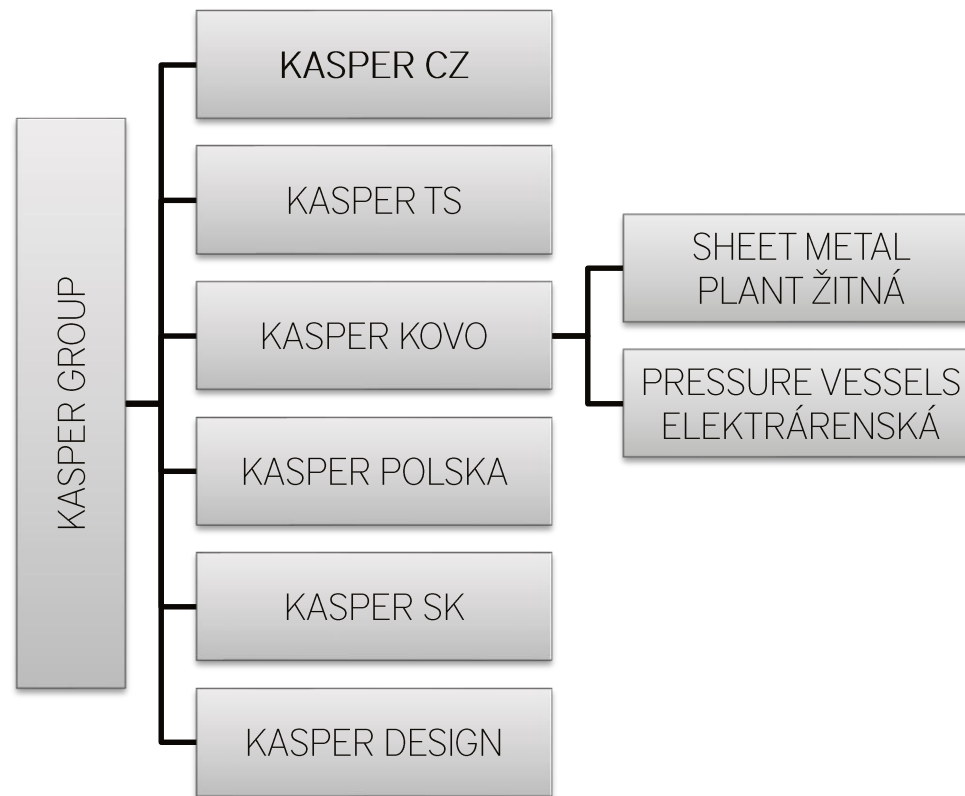




KASPER KOVO >

ORGANISATIONAL STRUCTURE



HISTORY

- 1992** establishment of the company in Úpice
- 1996** focus on sheet-metal processing in cooperation with european companies
- 1999** first sheet-metal cutting laser installation
- 2001** moving into new premises in Trutnov, Žitná
- 2006** reconstruction of new premises in Trutnov (1. stage)
- 2011** extension with a new plant Elektrárenská (pressure vessels)
- 2012** certification according to international railways standards
- 2013** ASME certification of the plant Elektrárenská
- 2014** reconstruction of the plant Elektrárenská (1. stage)
- 2015** launch of Lean production principles implementation
- 2016** successful implementation of lean processes such as 5S, shop floor management, etc.
- 2018** establishment of automated and full robotic workplaces in the plant Elektrárenská



THE RELIABLE PARTNER IN SHEET METAL FABRICATION



COMPANY PHILOSOPHY

- long term cooperation with all customers
- high quality level in production and flexible communication
- worldwide logistics
- separated material flow in production (steel vs. stainless-steel)



CORE COMPETENCES

- pressure vessels manufactured of mild steel, stainless steel and aluminium
- static and dynamic vessel calculation for compliance with all requirements
- vessel production according PED, ASME, GOST, EN etc. standards
- flexible communication in world languages
- worldwide logistics
- development of products in 3D Solid Works
- welding school



KEY DATA

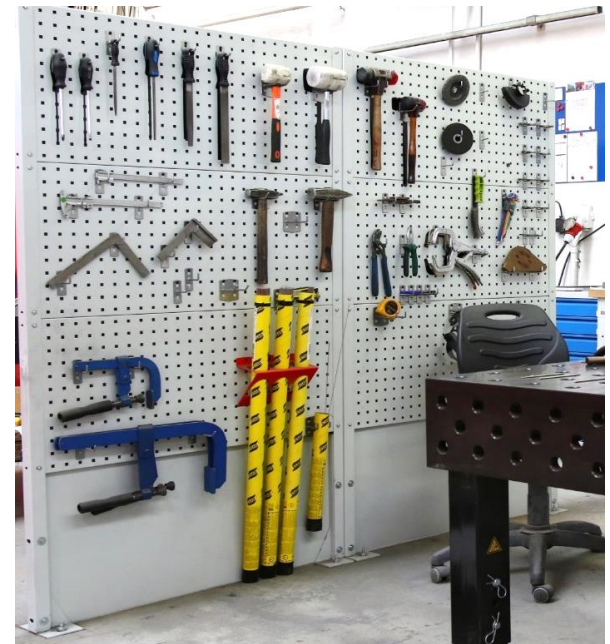
- turnover in 2018 – 24,5 million EUR
(plan for 2019 – 25 million EUR)
- plant Elektrárenská appr. 8,5 million EUR
- export share – 70 %
- sheet – metal consumption 5 700 t per year
- 375 employees
- company in private ownership



KEY DATA

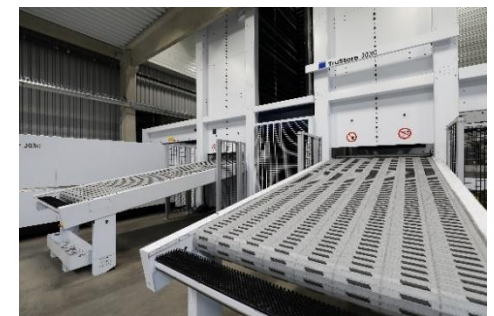
- Company certificates:
 - EN ISO 9001:2009
 - EN ISO 14001
 - EN ISO 18001
 - EN 15085, CL1 – international railways standards
 - EN 1090 – EXC3 steel structures
 - ASME Code section VIII / div. 1, certificate of authorization for pressure vessels
 - GOST certification for pressure vessels

- The company implemented parts of automotive standards (TS)



MACHINES

- Lasers
 - TRULAS 3030 FIBER 6,0 kW **new**
 - Automated center with 2 machines TRULAS 3030 FIBER 6,0 kW **new**
- Punching machine
 - TruMatic 5000
- Plasma cutting
 - Cutting thickness up to 40 mm



THE RELIABLE PARTNER IN SHEET METAL FABRICATION



MACHINES

- 1 bending machine SAFAN for steel
- 5 bending machines TRUMPF for steel **new**
- 1 bending machines TRUMPF for stainless-steel **new**



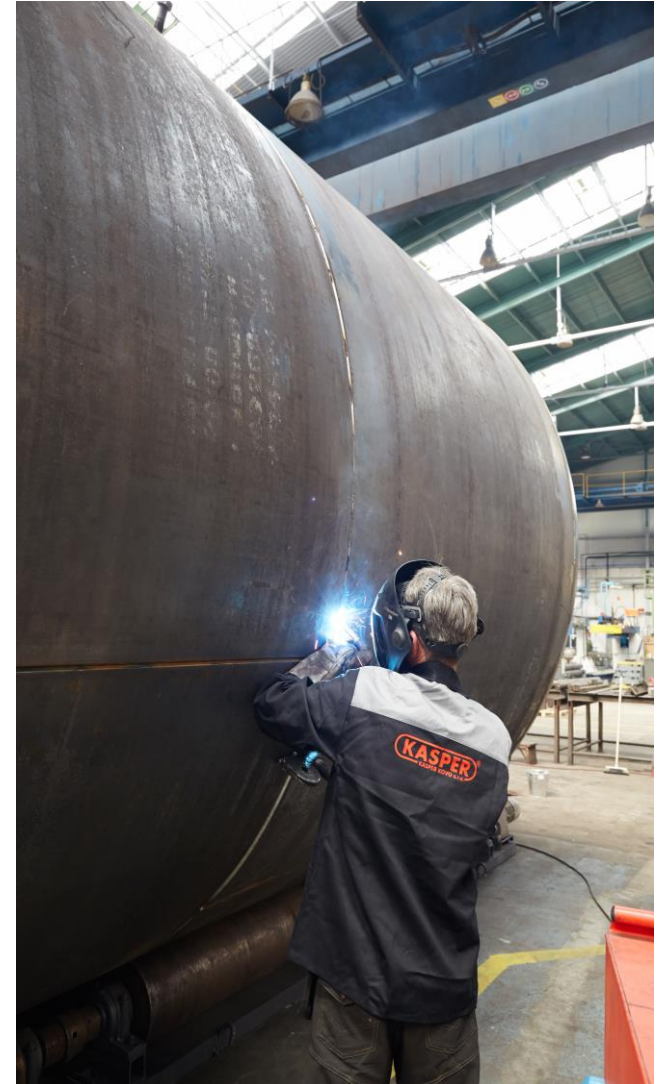
MACHINES

- Roll bending machine MG s.r.l. with the bending parameters
 - max. diameter 4,5 m
 - max. thickness 35 mm
 - length 3 m
- Roll bending machine MCA for thin sheets
 - max. thickness 6 mm
 - length 2 m



MACHINES

- Welding capacity (equipment ESAB)
 - 10 welding workplaces for steel
 - 8 welding workplaces for stainless-steel
 - 2 working places for aluminium welding
 - All welding shops divided to the separately located production floors
 - Welding Workstations - Robotized



MACHINES

- Semi-automatic welding for vessels
- Welding arm ESAB – welding of pressure tanks – welding method UP (submerged arc)

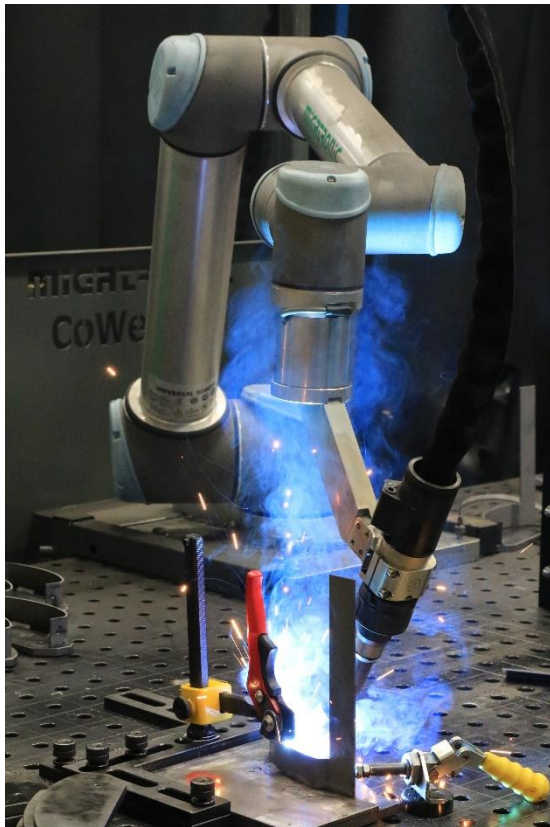


THE RELIABLE PARTNER IN SHEET METAL FABRICATION



MACHINES

Robotic-welding workplaces CLOOS and MIGATRONIC



THE RELIABLE PARTNER IN SHEET METAL FABRICATION



MACHINES

Robotic-welding workplaces CLOOS and MIGATRONIC

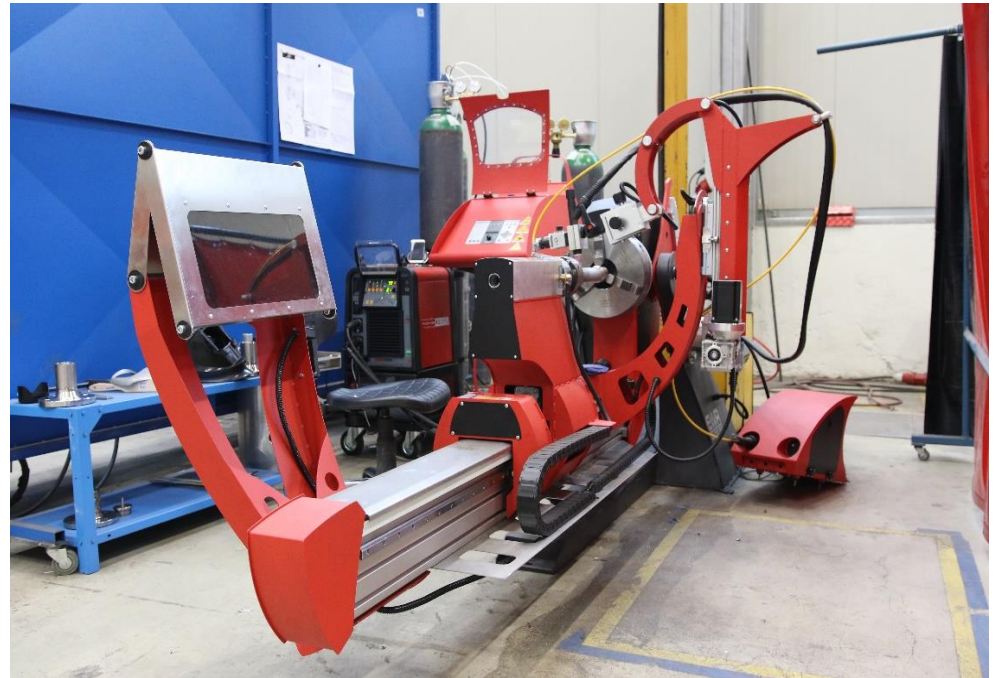


THE RELIABLE PARTNER IN SHEET METAL FABRICATION



MACHINES

- Modern automatic workplace for welding of pressure vessels made of steel and stainless steel



MACHINES

- Ceramic-blasting of stainless-steel
- Shot blasting with steel balls
- Powder painting shop
 - max. size 2 x 1,4 x 1,4 m
 - max. weight of parts 250 kg
 - pre-treatment – phosphate coating and 3-phase water-spray rinsing



THE RELIABLE PARTNER IN SHEET METAL FABRICATION



MACHINES

- Wet painting
 - max. size 10 x 4 x 4 m
 - max. weight 25 000 kg
 - pre-treatment – blasting GH 40



MACHINES

- Blasting
 - max. size 10 x 4 x 4 m
 - max. weight 25 000 kg / Pcs.
 - abrasive material: angular steel grid



THE RELIABLE PARTNER IN SHEET METAL FABRICATION



BRANCHES

- Energy
- Water treatment
- Processing of chemical substances
- Heating
- Trains
- CNC Machining
- Food industry
- Medical industry



EXPORT RANGE

- Germany and Austria (20 %)
- Switzerland (30 %)
- Great Britain (5 %)
- Benelux (5 %)
- Sweden (15 %)
- Spain
- USA
- China and India...



THE RELIABLE PARTNER IN SHEET METAL FABRICATION



PRODUCTS

AIR VESSELS FOR MEDICAL DENTAL SYSTEMS 50 L / 8 BAR (EU)

Manufactured according to PED 97/23/EC

Material: mild steel



THE RELIABLE PARTNER IN SHEET METAL FABRICATION



PRODUCTS

WATER MANAGEMENT (RUSSIAN FEDERATION) PROMINENT SYSTEMS

Pressure tanks 1600 l / 16 BAR, diameter 1100 mm

Manufactured according to PED 97/23/EC a GOST

Material: stainless steel



THE RELIABLE PARTNER IN SHEET METAL FABRICATION



PRODUCTS

TRAIN SETS SAUDI ARABIA, PROJECT TALGO

Pressure tanks 2 x 180 l / 8 BAR

Manufactured according to EN 286-3

Material: stainless steel



THE RELIABLE PARTNER IN SHEET METAL FABRICATION



PRODUCTS

TRAIN SETS SAUDI ARABIA, PROJECT TALGO

Air vessels 100 l / 10 BAR

Manufactured according to EN 286-4

Material: aluminium



THE RELIABLE PARTNER IN SHEET METAL FABRICATION



PRODUCTS

TRAIN ASSEMBLIES, PROJECT BY PATENTES TALGO, ES

Air vessel 455 l

Manufactured according to EN 13455, PED,

Material: stainless steel 1.4404



THE RELIABLE PARTNER IN SHEET METAL FABRICATION



PRODUCTS

NITROGEN AND OXYGEN GENERATORS, OXYMAT, SK

Vessels 700 – 4000 L

Manufactured according to EN 13445, PED, ASME, certified BV, ABS, LR, DNV, GOST

Material: Carbon steel



THE RELIABLE PARTNER IN SHEET METAL FABRICATION



LOGISTICS

- WE OFFER ALL PRODUCTS INCLUDING THE POSSIBILITY OF A COMPLEX LOGISTICS



SPOLEHLIVÝ PARTNER V OBLASTI ZPRACOVÁNÍ PLECHU



DĚKUJI VÁM ZA POZORNOST.





ING. JAKUB KASPER

Managing Director

Tel.: +420 499 827 169

E-mail: j.kasper@kasperkovo.cz

KASPER KOVO s.r.o.

Žitná 476, CZ-541 03 Trutnov

Czech Republic

www.kasperkovo.cz | www.kaspergroup.cz